

MOUNTAIN PKWY (KY 9009) IMPROVEMENTS  
WATER LINE RELOCATION PROJECT  
MORGAN COUNTY WATER DISTRICT  
MORGAN COUNTY, KENTUCKY

FD52 119 9009 056-058

FD52 088 9009 057-060

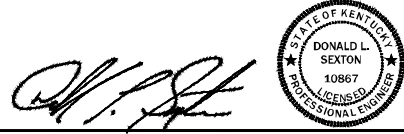
ITEM NO. 10-126.70

NHPP 0061 (067)

PRELIMINARY PLANS NOT FOR CONSTRUCTION



JULY 2015

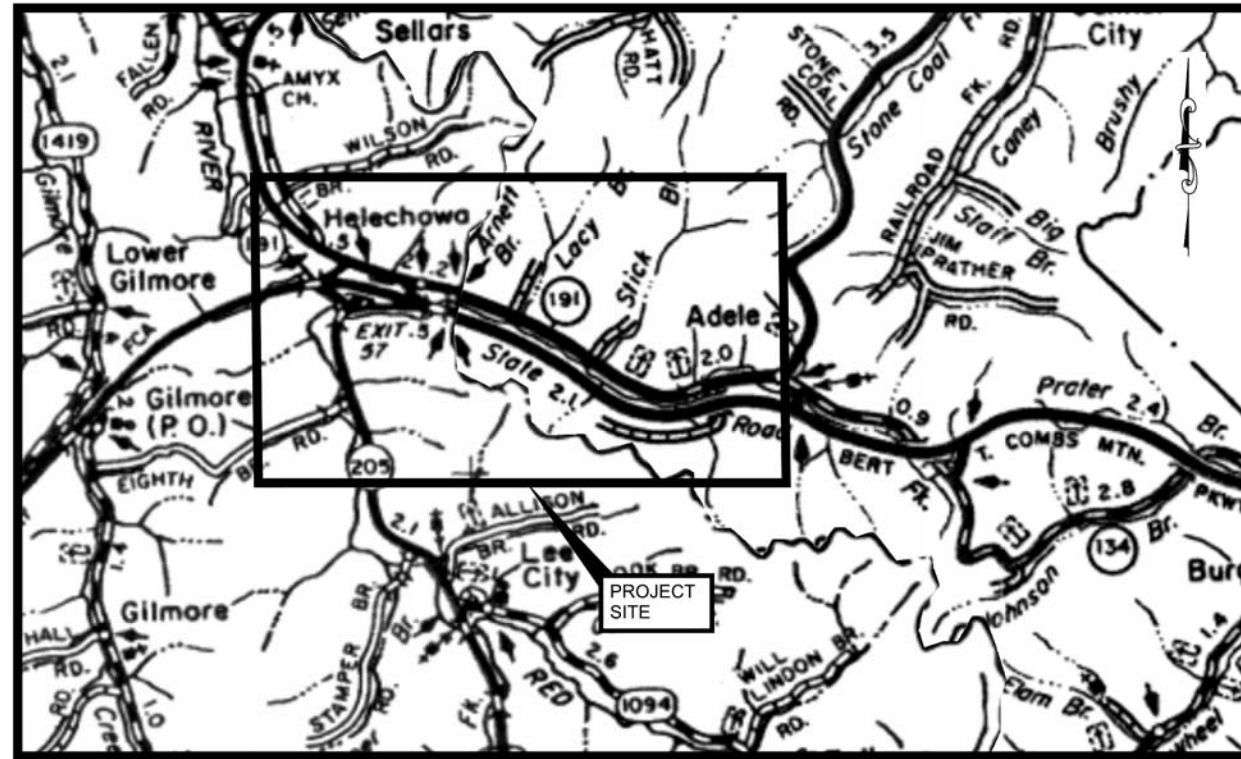


DONALD L. SEXTON P.E. KY Reg. No. 10867

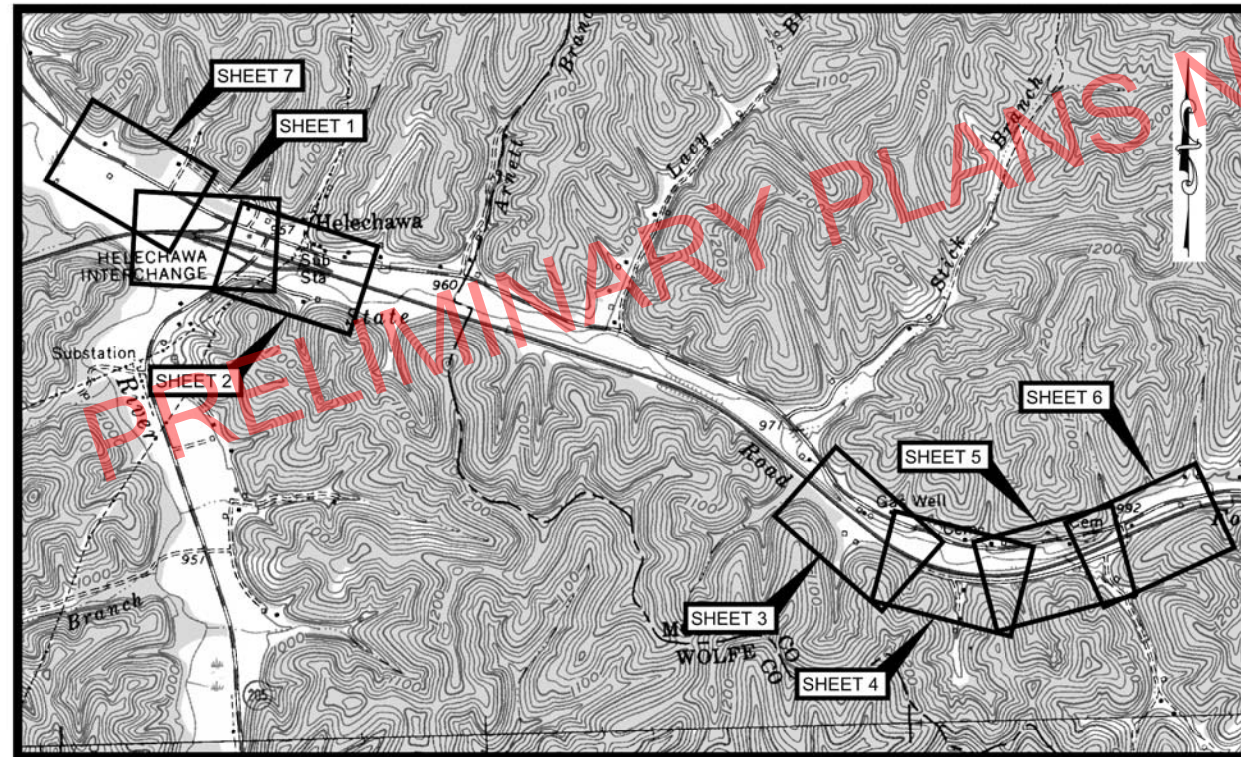
SHEET U1

**CT** **CANN-TECH, LLC**  
Engineers · Planners · Managers  
1100 Glensboro Road  
Lawrenceburg, KY 40342  
Phone (502) 859-0907  
Fax (502) 859-0668





VICINITY MAP  
SCALE: N.T.S.



TOPOGRAPHIC MAP  
SCALE: 1"=1000'

**GENERAL NOTES**

- ALL WATER MAINS SHALL BE SDR-17, CL. 250 UNLESS OTHERWISE NOTED ON THE PLANS.
- UNLESS OTHERWISE NOTED, A SEPARATE BID ITEM AS NOT BEEN ESTABLISHED FOR FITTINGS. THE FITTINGS INVOLVED, BUT NOT LIMITED TO TEES, BENDS, PLUGS, REDUCERS, SADDLES, CROSSES, COUPLINGS, ETC. CONTRACTOR SHALL INCLUDE THE COST OF THESE ITEMS IN THE UNIT PRICE BID FOR THE PIPE.
- NO PAY ITEM FOR EXTRA, TRENCH DEPTH HAS BEEN ESTABLISHED. CONTRACTOR SHALL INCLUDE THE COST OF THE ADDITIONAL DEPTH IN HIS UNIT PRICE WHEN THE WATER PIPE CROSSES UNDER AN EXISTING UTILITY, CULVERT, DRAINAGE DITCH, ROADWAY, ETC.
- FINAL LOCATION OF SERVICES, GATE VALVES AND OTHER APPURTENANCES ARE TO BE FIELD LOCATED DURING CONSTRUCTION AND APPROVED BY THE ENGINEER.
- EXISTING UTILITIES, ESPECIALLY GAS LINE AND OIL LINES MAY BE CATHODICALLY PROTECTED; THEREFORE, DUCTILE IRON PIPE, FITTINGS, GATE VALVES, AND/OR BOXES LAID WITHIN 100' OF THESE LINES WITH CATHODIC PROTECTION SHALL MEET THE REQUIREMENTS OF AWWA C-105, LATEST REVISION. A SEPARATE ITEM HAS NOT BEEN ESTABLISHED. ALL COST FOR LABOR AND MATERIALS MUST BE INCLUDED IN THE UNIT PRICE BID FOR PIPE.
- ALL DAMAGE TO EXISTING UTILITIES CAUSED BY THE CONTRACTOR'S OPERATION SHALL BE REPAIRED BY THE CONTRACTOR AT NO COST TO THE OWNER.
- ALL CONCRETE THRUST BLOCKS AND RESTRAINTS ARE NOT SHOWN ON THE DRAWING; HOWEVER, CONCRETE THRUST BLOCKS SHALL BE INSTALLED AT ALL BENDS, TEES, CROSSES, DEAD ENDS, ETC. THRUST BLOCKS SHALL BE SIZED ACCORDINGLY AS SHOWN ON THE CONCRETE THRUST BLOCK DETAIL. ANY ADDITIONAL THRUST BLOCKS REQUIRED SHALL BE INCLUDED IN THE UNIT PRICE BID FOR THE PIPE. THRUST BLOCK SHALL BE POURED IN PLACE READY MIX CONCRETE, MINIMUM 3000 P.S.I.
- THE CONTRACTOR SHALL CONFINE ALL CONSTRUCTION ACTIVITY TO THE AREA WITHIN THE EXISTING EASEMENTS AND CONSTRUCTION LIMITS, UNLESS OTHERWISE APPROVED IN WRITING BY THE OWNER.
- THE CONTRACTOR WILL BE SOLELY LIABLE FOR ANY WORK HE PERFORMS OUTSIDE OF LEGAL EASEMENTS OR CONSTRUCTION LIMITS.
- SEPTIC SYSTEMS MAY BE LOCATED IN SOME AREAS. CONTRACTOR TO USE CAUTION IN THESE AREAS. WATER MAIN TO BE ENGAGED IN CONCRETE WHEN LAID WITHIN 10' OF DRAIN LINES OR FIELD. SEE DETAILS AND NOTE ON STANDARD DETAIL SHEET. WHERE DRAIN LINES ARE ENCOUNTERED AND IT IS DETERMINED THAT THE LINES NEED TO BE CONCRETE ENCASED THE CONTRACTOR SHALL BE PAID AT THE UNIT PRICE BID FOR CONCRETE. NO OTHER ADDITIONAL COMPENSATION WILL BE APPROVED.
- IT SHALL BE THE CONTRACTOR'S RESPONSIBILITY TO ASCERTAIN THE LOCATIONS OF ANY AND ALL UTILITIES ENCOUNTERED BY THE FINAL ALIGNMENT OF THE WATER LINE. THE CONTRACTOR SHALL USE CAUTION WHEN EXCAVATING AND SHALL TAKE THE NECESSARY MEASURES TO PROTECT THE EXISTING UTILITIES TO KEEP THEM IN SERVICE. IF UTILITIES ARE SHOWN, THE INFORMATION IS GENERAL IN NATURE AND NOT TO BE TAKEN AS RECORD DRAWINGS. CONTRACTOR SHALL CONTACT REPRESENTATIVES OF LOCAL UTILITIES A MINIMUM OF 48 HOURS BEFORE COMMENCING WORK ON THE PROJECT.
- THE CONTRACTOR SHALL OBTAIN ALL PERMITS AND GIVE ALL NOTICES REQUIRED FOR EXECUTION OF THE WORK. THE CONTRACTOR SHALL PAY FOR ALL PERMITS AND ANY APPLICABLE WATER SERVICE INSPECTION FEES.
- THE CONTRACTOR SHALL CONFIRM TO ALL LOCAL, STATE AND FEDERAL CODES AND RECEIVE APPROVAL WHERE NECESSARY PRIOR TO COMMENCEMENT OF THE WORK.
- ALL PIPING BENDS ARE NOT NECESSARILY SHOWN ON THE DRAWINGS. ADDITIONAL BENDS MAY BE NECESSARY TO CONFORM WITH ELEVATIONS SHOWN AND TO MAINTAIN ADEQUATE GROUND COVER. ANY ADDITIONAL BENDS REQUIRED SHALL BE INCLUDED IN THE UNIT PRICE BID FOR THE PIPE.
- THE ENGINEER RESERVES THE RIGHT TO MAKE MINOR FIELD ADJUSTMENTS IN THE WORK IN ORDER TO ACCOMPLISH THE INTENT OF THE DESIGN.
- WHERE KYTC RIGHT-OF-WAY LINES ARE INDICATED THE LOCATION IS APPROXIMATE ONLY. IT SHALL BE THE CONTRACTOR'S RESPONSIBILITY TO LOCATE ALL FINAL RIGHT-OF-WAY LINES.
- EFFORTS HAVE BEEN MADE TO INDICATE ACCURATE LOCATIONS OF EXISTING STRUCTURES, PIPING AND UTILITIES. HOWEVER, THE CONTRACTOR SHALL FAMILIARIZE HIMSELF WITH THE SITE AND OTHER EXISTING CONDITIONS AND NOTIFY THE ENGINEER OF ANY DISCREPANCIES BETWEEN INFORMATION DEPICTED BY THE CONSTRUCTION DRAWINGS AND ACTUAL FIELD CONDITIONS WHICH WOULD SIGNIFICANTLY ALTER THE DESIGN INTENT OF THE CONSTRUCTION OPERATIONS. DIMENSIONS OF EXISTING STRUCTURES AND/OR SITE RESTRICTIONS ARE APPROXIMATE. IT IS THE CONTRACTOR'S RESPONSIBILITY TO OBTAIN AND CONFIRM ALL DIMENSIONS AND ELEVATIONS OF EXISTING STRUCTURES AND TOPOGRAPHY IN THE FIELD NECESSARY FOR HIS CONSTRUCTION OPERATION.
- THE CONTRACTOR SHALL USE ALL POSSIBLE CARE DURING EXCAVATION ON THIS PROJECT SO AS NOT TO DISTURB OR DAMAGE ANY EXISTING UTILITY OR STRUCTURE NOT SCHEDULED FOR DEMOLITION WHETHER DEPICTED OR NOT IN THE CONSTRUCTION DRAWINGS. ANY DAMAGE TO THE AFORE MENTIONED ITEMS CAUSED DIRECTLY OR INDIRECTLY BY THE CONTRACTOR SHALL BE REPAIRED OR REPLACED BY THE CONTRACTOR AT NO COST TO THE OWNER TO A CONDITION EQUAL TO OR BETTER THAN THAT WHICH EXISTED PRIOR TO BEING DAMAGED.
- IT IS THE CONTRACTOR'S RESPONSIBILITY TO CONTACT ALL EXISTING UTILITY OWNERS AND HAVE THEM FIELD LOCATE THEIR EXISTING UTILITIES PRIOR TO ANY CONSTRUCTION ACTIVITIES.
- EXISTING UTILITIES DEPICTED IN THE CONSTRUCTION DRAWINGS WERE LOCATED FROM ACTUAL FIELD EVIDENCE, EXISTING UTILITY AGENCIES RECORDS OR OTHER AVAILABLE EVIDENCE. OTHER UTILITIES MAY EXIST AND NOT BE SHOWN OR MAY VARY FROM WHERE SHOWN. NO GUARANTEE IS EXPRESSED OR IMPLIED AS TO ACTUAL LOCATION OF UTILITIES SHOWN HEREON, BUT NOT VISIBLE FROM THE SURFACE.

- THE CONTRACTOR SHALL CONFINE ALL CONSTRUCTION ACTIVITIES TO THE AREA WITHIN EXISTING EASEMENTS AND CONSTRUCTION LIMITS UNLESS OTHERWISE APPROVED IN WRITING BY THE OWNER.
- UNLESS OTHERWISE NOTED, ALL BURIED PIPES SHALL HAVE 36" (MIN.) COVER AS MEASURED FROM FINISHED GRAD TO THE OUTSIDE SURFACE OF THE PIPE.
- IT SHALL BE THE CONTRACTOR'S RESPONSIBILITY TO WORK ALL APPLICABLE DRAWINGS AND THE APPROPRIATE SPECIFICATIONS AS A UNIT. ANY OMISSIONS, DELETIONS, OR CONFLICTS ARISING AS A RESULT OF FAILURE TO INCORPORATE ALL DRAWINGS AND SPECIFICATIONS WHICH APPLY SHALL BE CORRECTED BY THE CONTRACTOR AT NO ADDED COST TO THE OWNER.
- ALL WORK DONE WITHIN THE CONFINES OF THE EXISTING RAILROAD RIGHT-OF-WAY SHALL BE IN ACCORDANCE WITH ALL APPLICABLE RAILROAD REQUIREMENTS. IT SHALL BE THE SOLE RESPONSIBILITY OF THE CONTRACTOR TO CONTRACT AND COORDINATE WITH THE PROPER RAILROAD AUTHORITIES AS REQUIRED.

**LEGEND**

PROPOSED WATERLINE	
EXISTING WATERLINE	
METER SETTING	
METER SETTING WITH PRV	
PROPOSED GATE VALVE	
EXISTING GATE VALVE	
AUTOMATIC AIR RELEASE VALVE	
FIRE HYDRANT / BLOWOFF HYDRANT	
PROPERTY LINE	
BLOWOFF ASSEMBLY	
STREAM/POND	
EXISTING SANITARY SEWER	
EXISTING GAS LINE	
PLUG	
FENCE	

MOUNTAIN PARKWAY (9009) IMPROVEMENTS MORGAN COUNTY WATER DISTRICT SUMMARY OF QUANTITIES			
BID CODES	DESCRIPTION	UNIT	QUANTITY
14059	6" WATER LINE - SDR-17	L.F.	2640
14035	6" WATER LINE - DUCTILE IRON	L.F.	400
14057	3" WATER LINE - SDR-17	L.F.	2390
14067	3" WATER LINE - HDPE DR 9	L.F.	440
14008	10" STEEL CASING PIPE (ROAD BORE)	L.F.	95
14014	10" STEEL CASING PIPE (OPEN CUT)	L.F.	20
14004	8" HDPE CASING PIPE (DIRECTIONAL BORE)	L.F.	325
14013	8" STEEL CASING PIPE (OPEN CUT)	L.F.	310
14004	CREEK CROSSING (DIRECTIONAL BORE)	L.F.	40
14019	3 NOZZLE BLOWOFF HYDRANT	EA.	1
14023	3" BLOWOFF ASSEMBLY	EA.	1
14003	3" CUT AND CAP	EA.	1
14029	METER RECONNECTION	EA.	2
21233ED	BITUMINOUS REPLACEMENT	L.F.	140
24441EC	GRAVEL REPLACEMENT	L.F.	40
14101	CONNECTION TO EXISTING WATER LINE (ALL SIZES AND TYPES)	EA.	3
	ABANDONED 6" WATER LINE	L.F.	2490
	ABANDONED 3" WATER LINE	L.F.	3365

**SHEET INDEX**

- U2 GENERAL NOTES/LEGEND/SUMMARY OF QUANTITIES/ SHEET INDEX/VICINITY MAP/TOPOGRAPHIC MAP
- U3 STA. 133+25 TO STA. 143+00
- U4 STA. 143+00 TO STA. 155+00
- U5 STA. 215+00 TO STA. 227+00
- U6 STA. 227+00 TO STA. 239+00
- U7 STA. 239+00 TO STA. 250+00
- U8 STA. 250+00 TO STA. 252+67.06
- U9 STA. 348+50 TO STA. 354+90.05
- U10 CROSS SECTIONS
- U11 STANDARD DETAILS
- U12 STANDARD DETAILS
- U13 STANDARD DETAILS
- U14 STANDARD DETAILS

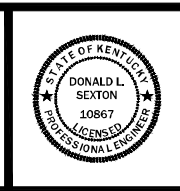
NO.	DATE	REVISIONS	DATE	APPR'D	DATE

PROJECT: 410	DATE: 11/2/05
SCALE: AS NOTED	
DESIGNED BY: LWC	
DRAWN BY: CAN	
CHECKED BY: DS	
RECORD DRAWINGS	

**CANN-TECH, LLC**  
Engineers · Planners · Managers

1100 Glensboro Road  
Lawrenceburg, KY 40342

Phone (502) 859-0907  
Fax (502) 859-0668



**WATER LINE RELOCATION PROJECT  
MORGAN COUNTY WATER DISTRICT  
MORGAN COUNTY, KENTUCKY**

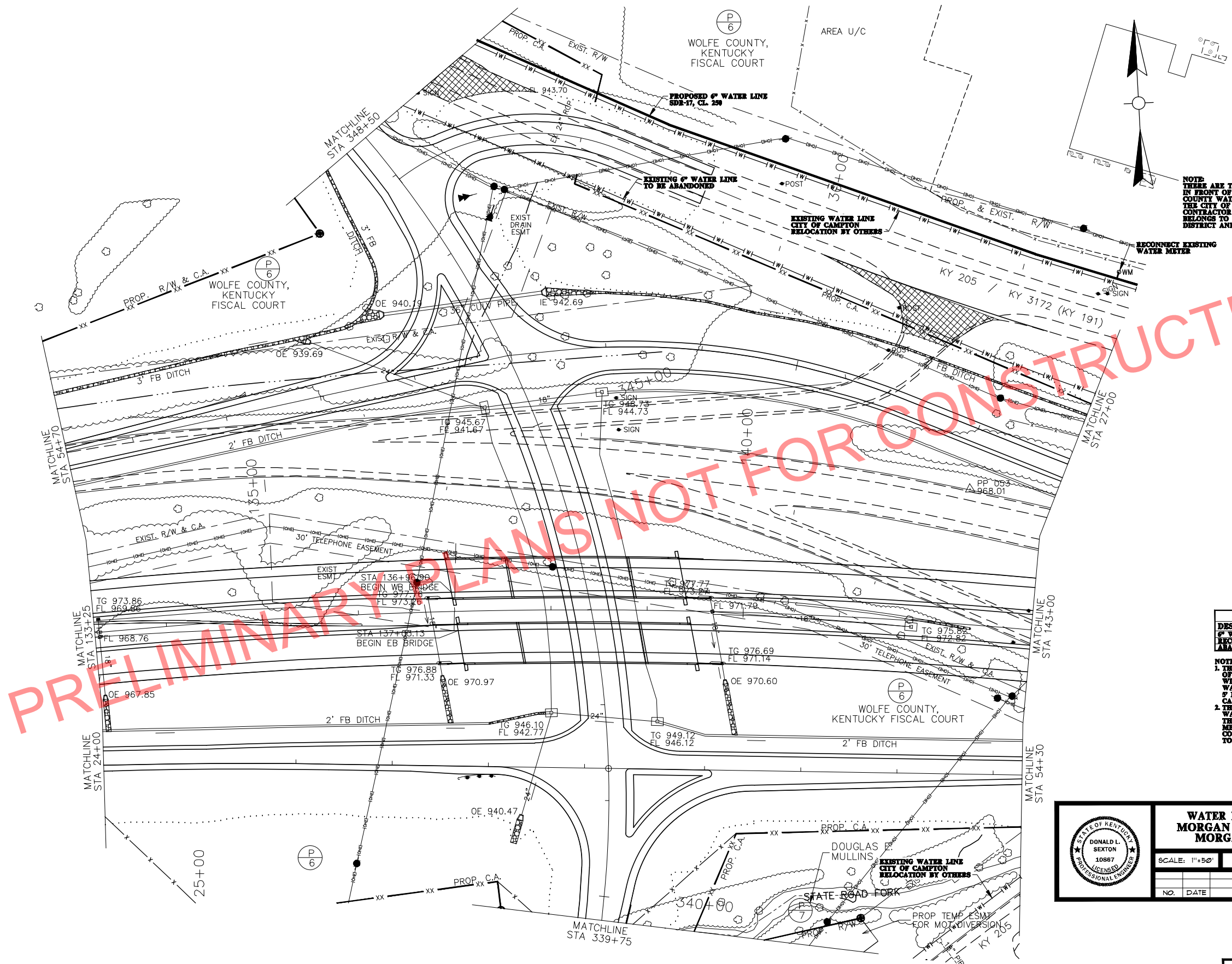
GENERAL NOTES/LEGEND/SUMMARY OF QUANTITIES/  
SHEET INDEX/VICINITY MAP/TOPOGRAPHIC MAP

SHEET  
U2  
OF  
U14



COUNTY OF	ITEM NO.	SHEET NO.
WOLFE	10-126.70	R14

FILE NAME: U:\MORGAN COUNTY WATER DISTRICT\410 - MT.PARKWAY\TCDRAWINGS\REVISED DWG 7.22.2015\R14.DWG  
 USER: dwright  
 DATE PLOTTED: November 2, 2015  
 E-SHEET NAME: R01400PL  
 MicroStation v8.11.9.459



NOTE  
 THERE ARE TWO (2) EXISTING METERS  
 IN FRONT OF THE CHOP SHOP. MORGAN  
 COUNTY WATER DISTRICT OWNS ONE AND  
 THE CITY OF CAMPTON OWNS ONE. THE  
 CONTRACTOR WILL VERIFY WHICH ONE  
 BELONGS TO THE MORGAN COUNTY WATER  
 DISTRICT AND RECONNECT IT.

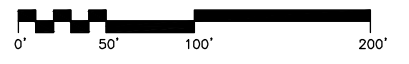
PRELIMINARY PLANS NOT FOR CONSTRUCTION

SUMMARY OF QUANTITIES		
DESCRIPTION	QTY	UNIT
6" WATER LINE, SDR-17	735	LF
RECONNECT EXISTING METER	1	EA
ABANDONED 6" WATER LINE	1	EA

NOTES:  
 1. THE CONTRACTOR WILL LOCATE THE CITY OF CAMPTON'S WATER LINE. THE CONTRACTOR WILL LAY THE PROPOSED MORGAN COUNTY WATER DISTRICT WATER LINE A MINIMUM OF 5' HORIZONTAL DISTANCE FROM THE CITY OF CAMPTON'S WATER LINE.  
 2. THE CONTRACTOR WILL VERIFY THAT THE EXISTING WATER METER TO BE RECONNECTED IS SERVED BY THE MORGAN COUNTY WATER DISTRICT. IF THE METER BELONGS TO THE CITY OF CAMPTON THE CONTRACTOR WILL NOT DISTURB OR DISRUPT SERVICE TO THE EXISTING METER.



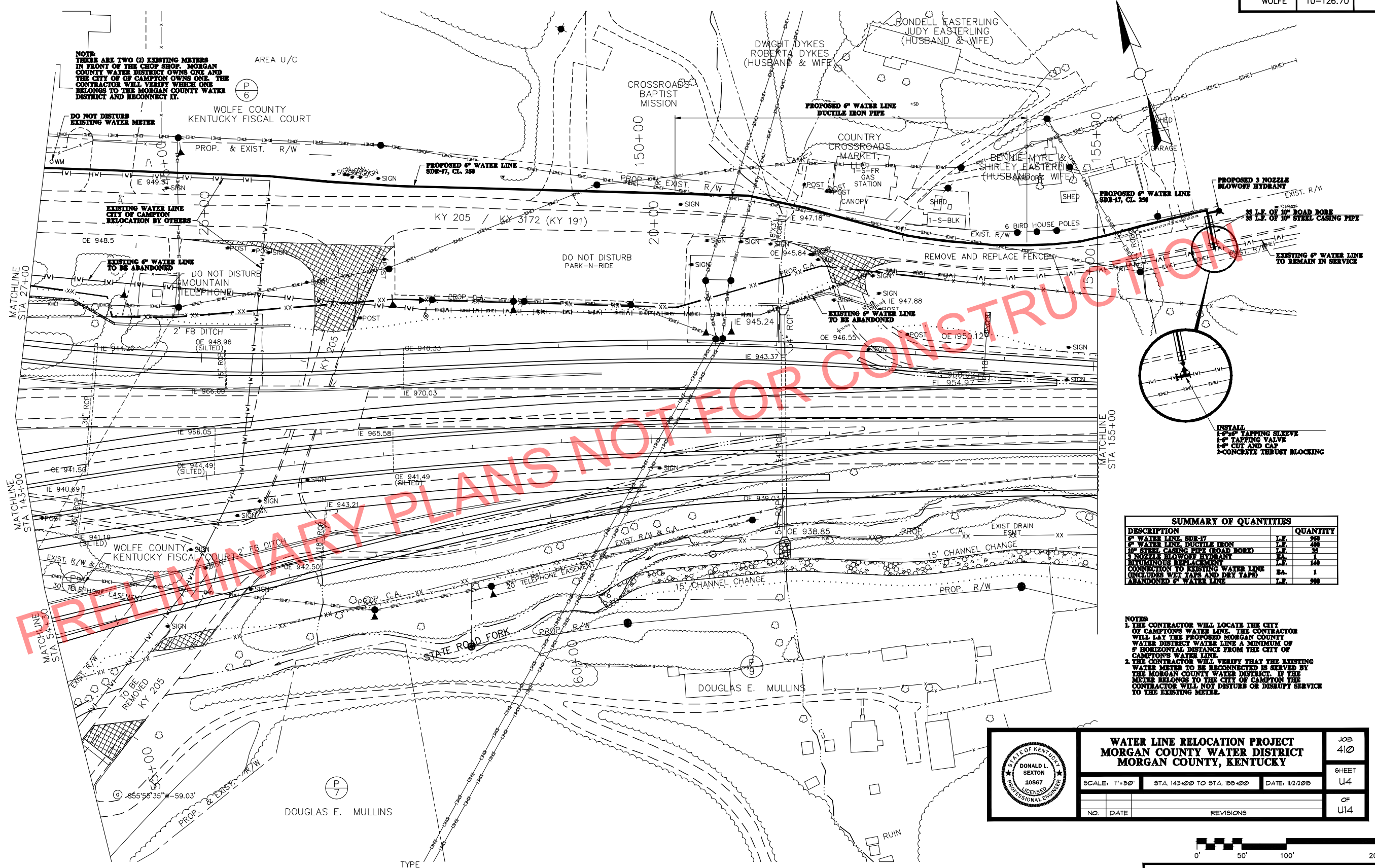
<b>WATER LINE RELOCATION PROJECT</b>			JOB
<b>MORGAN COUNTY WATER DISTRICT</b>			410
<b>MORGAN COUNTY, KENTUCKY</b>			SHEET
SCALE: 1"=50'	STA. 133+25 TO STA. 143+00	DATE: 11/2/2015	U3
NO.	DATE	REVISIONS	OF
			U14



MT PKWY PLAN SHEET  
 STA 133+25 TO STA 143+00

SCALE: 1"=50'

COUNTY OF	ITEM NO.	SHEET NO.
WOLFE	10-126.70	R20



NOTE:  
THERE ARE TWO (2) EXISTING METERS  
IN FRONT OF THE CHOP SHOP. MORGAN  
COUNTY WATER DISTRICT OWNS ONE AND  
THE CITY OF CAMPTON OWNS ONE. THE  
CONTRACTOR WILL VERIFY WHICH ONE  
BELONGS TO THE MORGAN COUNTY WATER  
DISTRICT AND RECONNECT IT.

DO NOT DISTURB  
EXISTING WATER METER

EXISTING WATER LINE  
CITY OF CAMPTON  
RELOCATION BY OTHERS

EXISTING 6" WATER LINE  
TO BE ABANDONED

EXISTING 6" WATER LINE  
TO BE ABANDONED

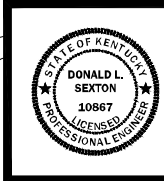
PROPOSED 3 NOZZLE  
BLOWOFF HYDRANT

EXISTING 6" WATER LINE  
TO REMAIN IN SERVICE

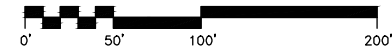
INSTALL  
1-6" TAPPING SLEEVE  
1-6" TAPPING VALVE  
1-6" CUT AND CAP  
2-CONCRETE THRUST BLOCKING

SUMMARY OF QUANTITIES		
DESCRIPTION	UNIT	QUANTITY
6" WATER LINE SDR-17	L.F.	200
6" WATER LINE DUCTILE IRON	L.F.	200
10' STEEL CASING PIPE (ROAD BORE)	L.F.	35
3 NOZZLE BLOWOFF HYDRANT	EA.	1
BITUMINOUS REPLACEMENT	L.F.	140
CONNECTION TO EXISTING WATER LINE (INCLUDES WET TAPS AND DRY TAPS)	EA.	1
ABANDONED 6" WATER LINE	L.F.	200

NOTES:  
1. THE CONTRACTOR WILL LOCATE THE CITY  
OF CAMPTON'S WATER LINE. THE CONTRACTOR  
WILL LAY THE PROPOSED MORGAN COUNTY  
WATER DISTRICT WATER LINE A MINIMUM OF  
5' HORIZONTAL DISTANCE FROM THE CITY OF  
CAMPTON'S WATER LINE.  
2. THE CONTRACTOR WILL VERIFY THAT THE EXISTING  
WATER METER TO BE RECONNECTED IS SERVED BY  
THE MORGAN COUNTY WATER DISTRICT. IF  
THE METER BELONGS TO THE CITY OF CAMPTON THE  
CONTRACTOR WILL NOT DISTURB OR DISRUPT SERVICE  
TO THE EXISTING METER.



<b>WATER LINE RELOCATION PROJECT</b>			JOB
<b>MORGAN COUNTY WATER DISTRICT</b>			410
<b>MORGAN COUNTY, KENTUCKY</b>			SHEET
SCALE: 1"=50'	STA. 143+00 TO STA. 155+00	DATE: 1/2/2015	U4
NO.	DATE	REVISIONS	OF
			U14



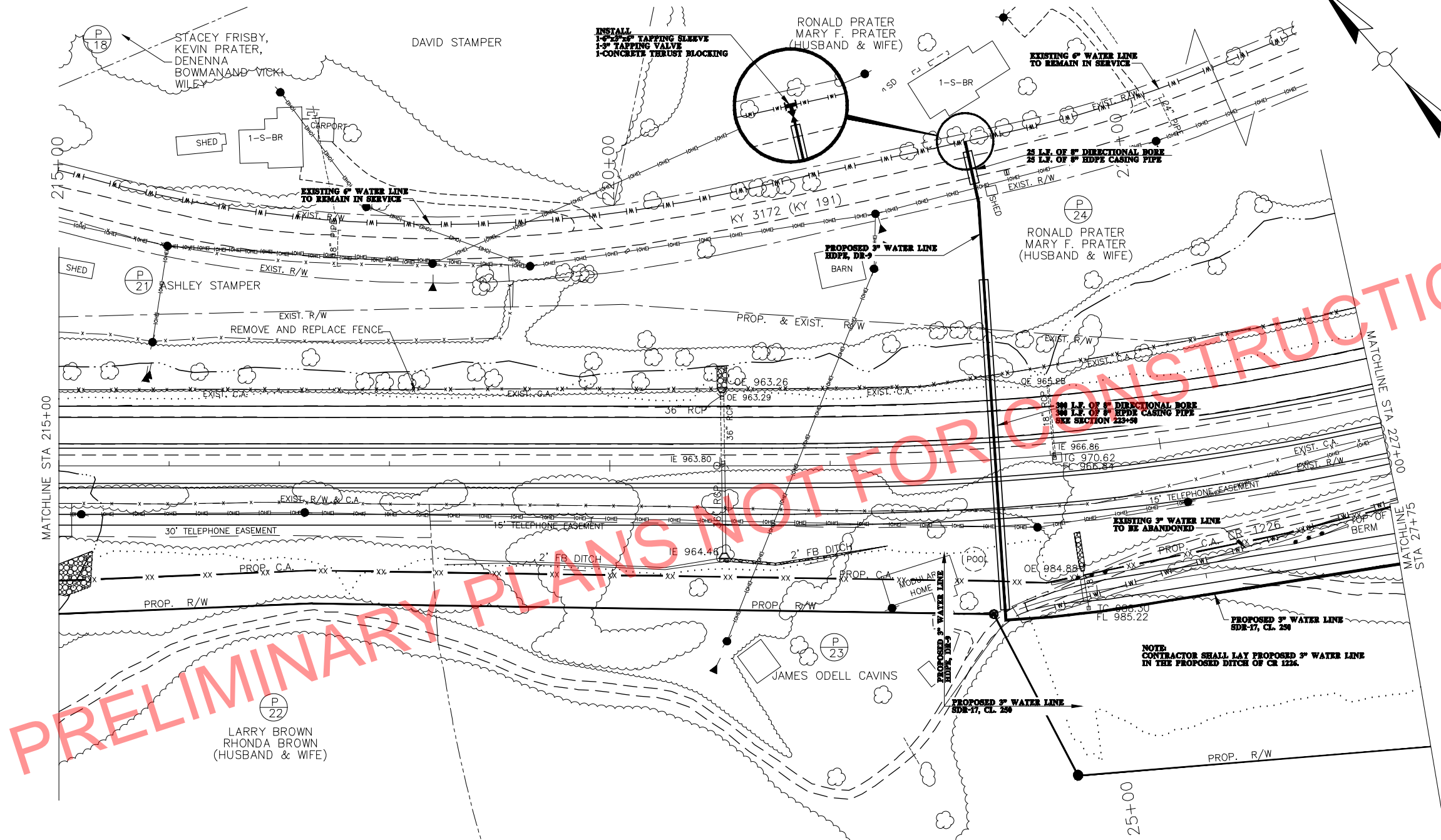
MT PKWY PLAN SHEET  
STA 143+00 TO STA 155+00

SCALE: 1"=50'

MicroStation v8.11.9.357  
 E-SHEET NAME: R20200PL  
 USER: bcoames  
 DATE PLOTTED: November 2, 2015  
 FILE NAME: U:\MORGAN COUNTY WATER DISTRICT\410 -  
 MT.PARKWAY\KTC\DRAWINGS\REVISED DWG 7.22.2015\R20.DWG



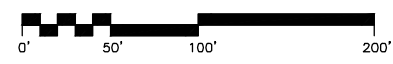
FILE NAME: U:\MORGAN COUNTY WATER DISTRICT\410 - MT.PARKWAY\KTC\DRAWINGS\REVISED DWG 7.22.2015\R34.DWG  
 USER: dwright  
 DATE PLOTTED: November 2, 2015  
 E-SHEET NAME: R03400PL  
 MicroStation v8.11.9.459



SUMMARY OF QUANTITIES	
DESCRIPTION	QUANTITY
3" WATER LINE HDPE DR 9	L.F. 440
3" WATER LINE SDR-17	L.F. 340
3" STEEL CASING PIPE DIRECTIONAL BORE	L.F. 225
GRAVEL REPLACEMENT	L.F. 20
CONNECTION TO EXISTING WATER LINE (INCLUDES WET TAPS AND DRY TAPS)	E.A. 1
ABANDONED 3" WATER LINE	L.F. 340



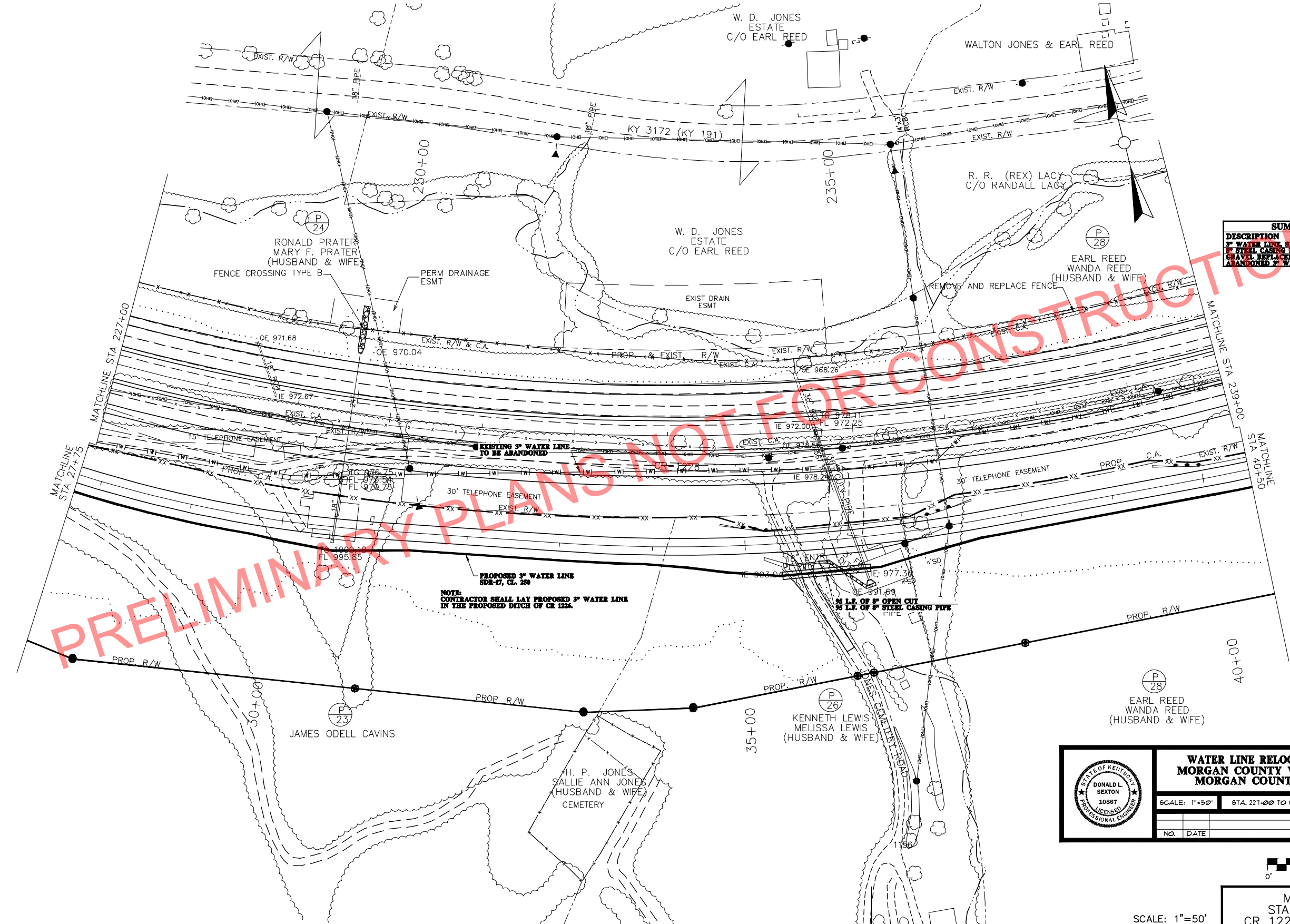
<b>WATER LINE RELOCATION PROJECT</b>			JOB 410
<b>MORGAN COUNTY WATER DISTRICT</b>			
<b>MORGAN COUNTY, KENTUCKY</b>			SHEET U5
SCALE: 1"=50'	STA. 215+00 TO STA. 221+00	DATE: 11/2/2015	
NO.	DATE	REVISIONS	OF U14



SCALE: 1"=50'  
 MT PKWY PLAN SHEET  
 STA 215+00 TO STA 221+00  
 CR 1226 STA 24+27.16 TO STA 27+75

COUNTY OF	ITEM NO.	SHEET NO.
MORGAN	10-126.70	R37

FILE NAME: U:\MORGAN COUNTY WATER DISTRICT\410 - MT.PARKWAY\TC.DRAWINGS\REVISED DWG 7.22.2015\R37.DWG  
 USER: dwright  
 DATE PLOTTED: November 2, 2015  
 E-SHEET NAME: R03700PL  
 MicroStation v8.11.9.459

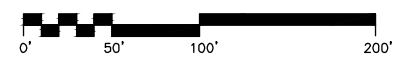


SUMMARY OF QUANTITIES		
DESCRIPTION	UNIT	QUANTITY
3" WATER LINE EDR-17	L.F.	1250
12" STEEL CASING PIPE (OPEN CUT)	L.F.	35
GRAVEL BACKFILL	CY	35
ABANDONED 3" WATER LINE	L.F.	1250

NOTE:  
CONTRACTOR SHALL LAY PROPOSED 3" WATER LINE  
IN THE PROPOSED DITCH OF CR 1226.



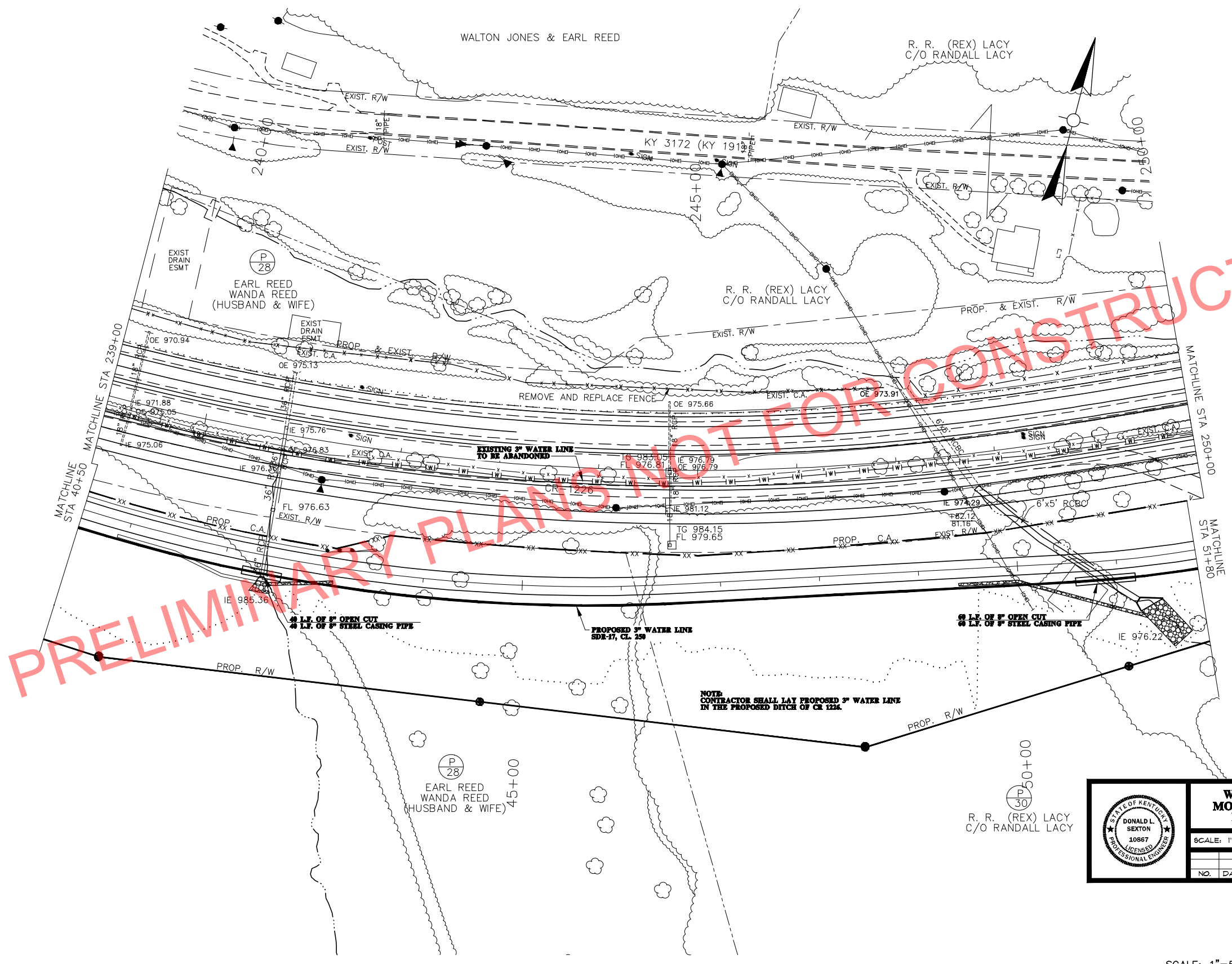
<b>WATER LINE RELOCATION PROJECT</b>			JOB
<b>MORGAN COUNTY WATER DISTRICT</b>			410
<b>MORGAN COUNTY, KENTUCKY</b>			SHEET
SCALE: 1"=50'	STA. 227+00 TO STA. 239+00	DATE: 11/2/2015	U6
NO.	DATE	REVISIONS	OF
			U14



SCALE: 1"=50'

MT PKWY PLAN SHEET  
 STA 227+00 TO STA 239+00  
 CR 1226 STA 27+75 TO STA 40+50

FILE NAME: U:\MORGAN COUNTY WATER DISTRICT\410 - MT.PARKWAY\KTC\DRAWINGS\REVISED DWG 7.22.2015\1R40.DWG  
 USER: dwright  
 DATE PLOTTED: November 2, 2015  
 E-SHEET NAME: R04000PL  
 MicroStation v8.11.9.459

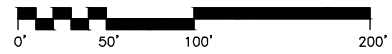


SUMMARY OF QUANTITIES		
DESCRIPTION	UNIT	QUANTITY
3" WATER LINE SDR-17	L.F.	100
3" STEEL CASING PIPE (OPEN CUT)	L.F.	100
ABANDONED 3" WATER LINE	L.F.	100

NOTE:  
CONTRACTOR SHALL LAY PROPOSED 3" WATER LINE  
IN THE PROPOSED DITCH OF CR 1226.



<b>WATER LINE RELOCATION PROJECT</b>			JOB 410
<b>MORGAN COUNTY WATER DISTRICT</b>			
<b>MORGAN COUNTY, KENTUCKY</b>			SHEET U1
SCALE: 1"=50'	STA. 239+00 TO STA. 250+00	DATE: 11/2/2015	
NO. DATE REVISIONS			OF U14



SCALE: 1"=50'

MT PKWY PLAN SHEET  
 STA 239+00 TO STA 250+00  
 CR 1226 STA 40+50 TO STA 51+80

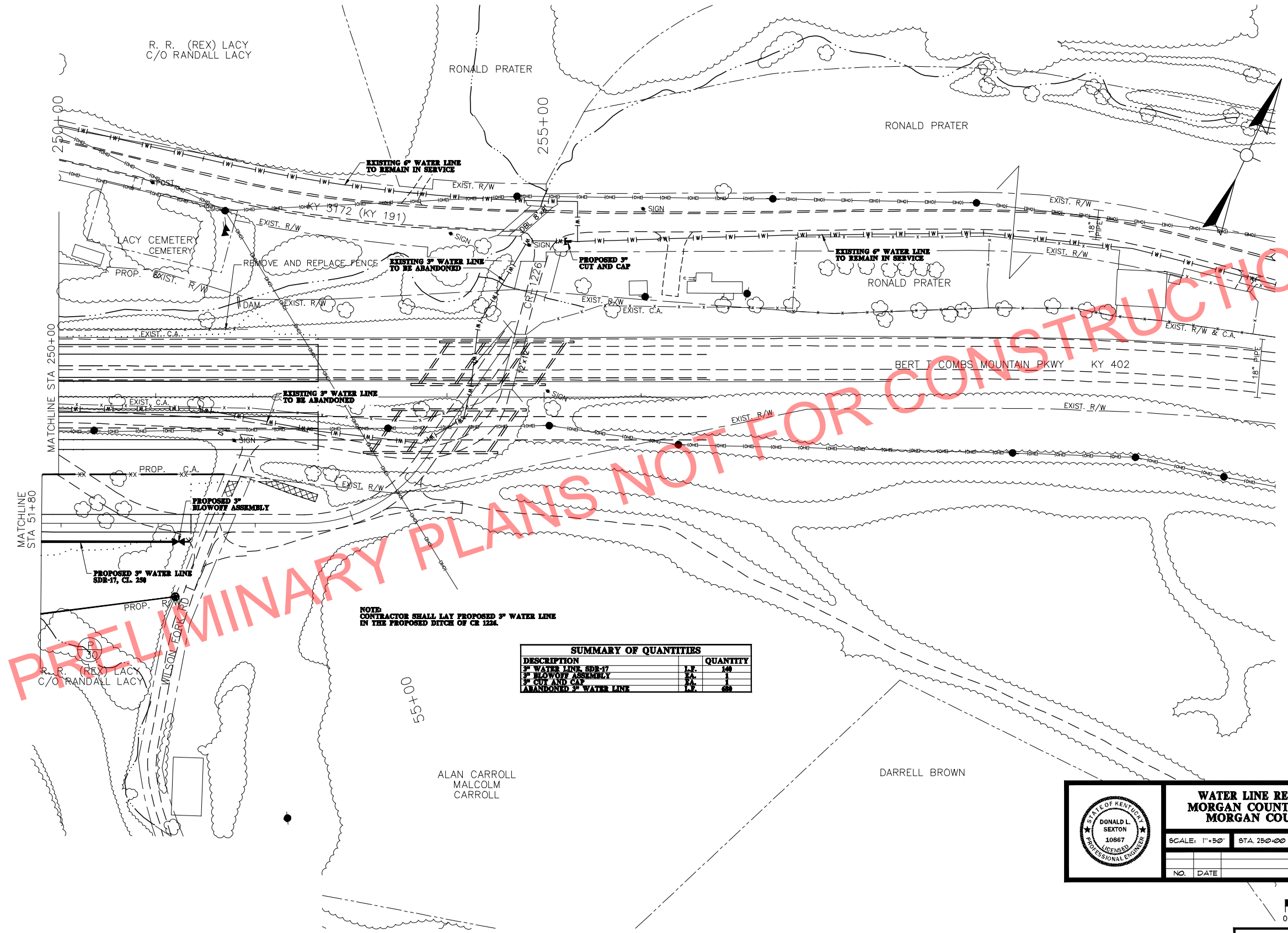


FILE NAME: U:\MORGAN COUNTY WATER DISTRICT\410 - MT.PARKWAY\TC DRAWINGS\REVISED DWG 7.22.2015\1R43.DWG

USER: dwright  
DATE PLOTTED: November 2, 2015

E-SHEET NAME: R04300PL

MicroStation v8.11.9.459



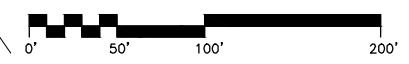
PRELIMINARY PLANS NOT FOR CONSTRUCTION

**NOTE**  
CONTRACTOR SHALL LAY PROPOSED 3" WATER LINE IN THE PROPOSED DITCH OF CR 1226.

SUMMARY OF QUANTITIES	
DESCRIPTION	QUANTITY
3" WATER LINE SDR-17	148
3" BLOWOFF ASSEMBLY	1
3" CUT AND CAP	2
ABANDONED 3" WATER LINE	689



<b>WATER LINE RELOCATION PROJECT</b>			JOB
<b>MORGAN COUNTY WATER DISTRICT</b>			410
<b>MORGAN COUNTY, KENTUCKY</b>			SHEET
SCALE: 1"=50'	STA. 250+00 TO STA. 252+67.06	DATE: 11/2/2015	UB
NO. DATE REVISIONS			OF
			U14



SCALE: 1"=50'

MT PKWY PLAN SHEET  
STA 250+00 TO STA 252+67.06  
CR 1226 STA 51+80 TO STA 53+41.09

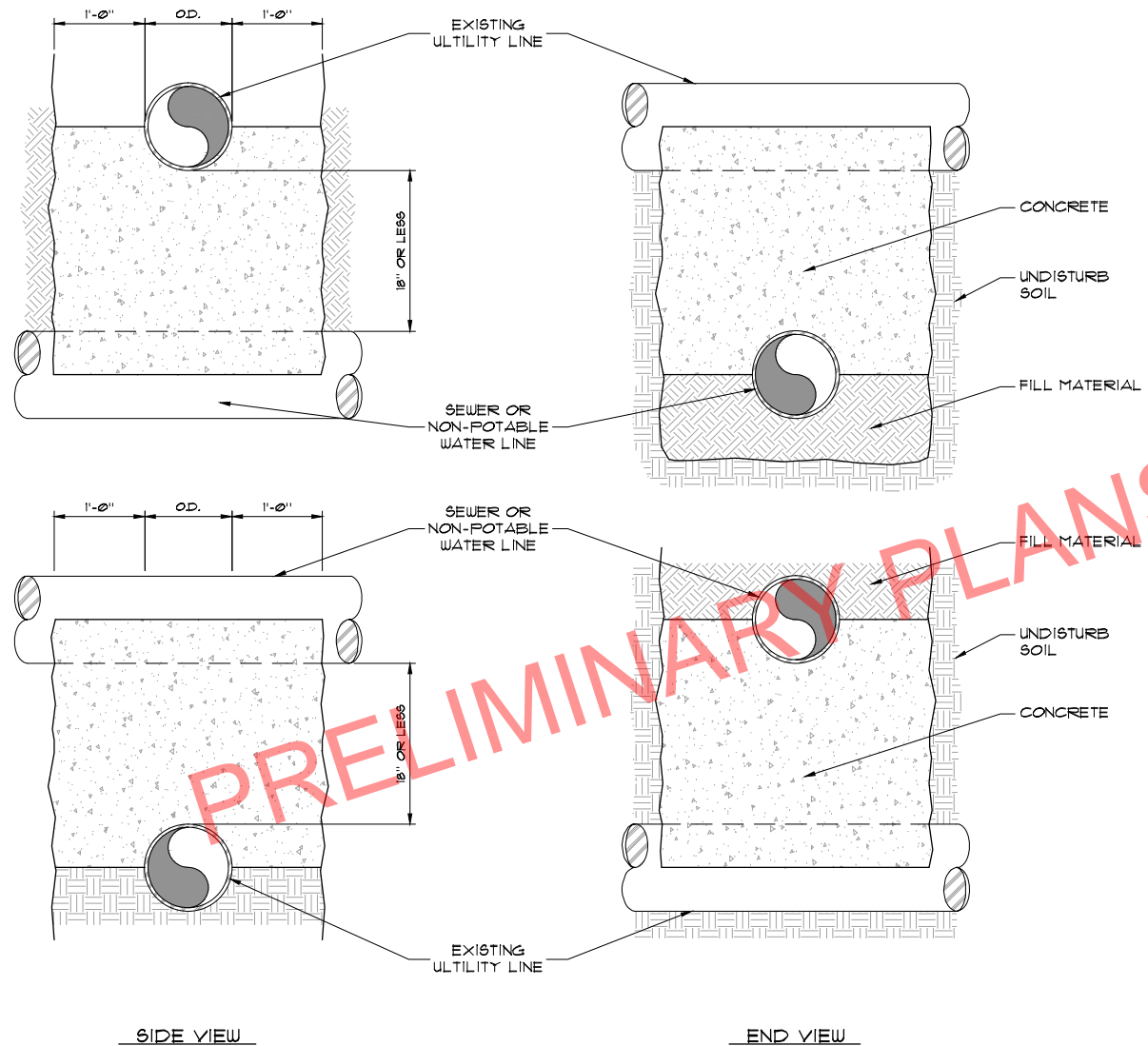




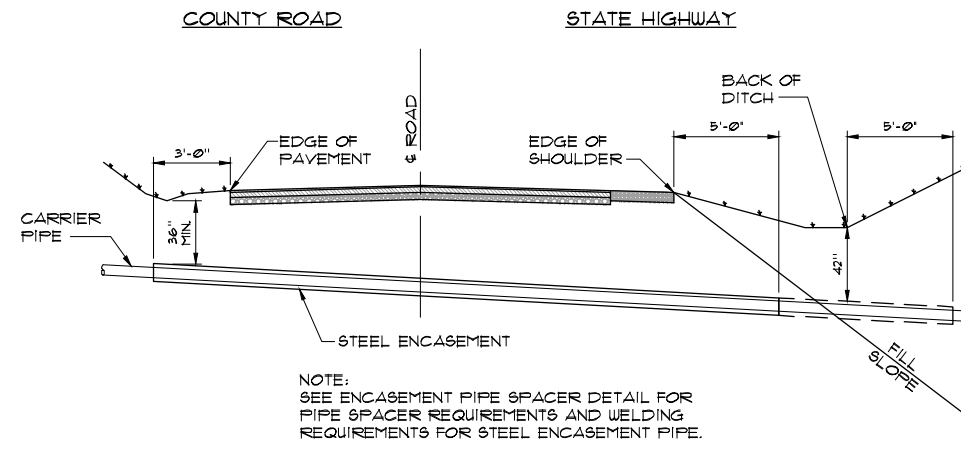




- NOTES:
1. CONCRETE ENCASUREMENT SHALL BE USED WHEN CLEARANCE BETWEEN SEWER OR NON-POTABLE WATER LINE AND UTILITY LINE IS 18" OR LESS.
  2. WHEN ENCOUNTERING UTILITY LINE WITH SEPARATION LESS THAN 18" VERTICAL OR 10'-0" HORIZONTAL, CONCRETE ENCASUREMENT SHALL BE USED. FULL SECTION OF SEWER OR NON-POTABLE WATER LINE SHALL BE CENTERED UNDER UTILITY LINE TO ACHIEVE MAXIMUM JOINT DISPLACEMENT.
  3. CONCRETE ENCASUREMENT IS NOT A SEPARATE PAY ITEM.



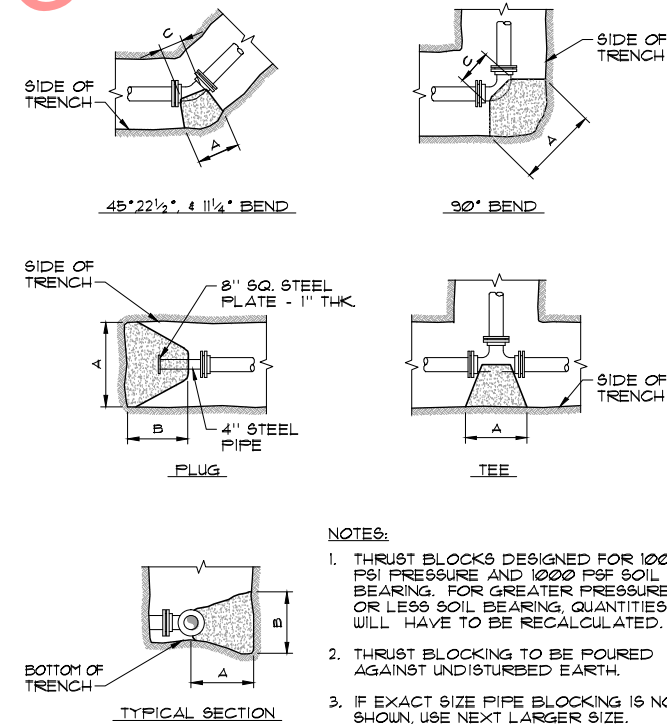
**UTILITY CROSSING/ENCASEMENT**  
SCALE: N.T.S.



**TYPICAL ROAD CROSSING**  
SCALE: N.T.S.

NOTE:  
SEE ENCASEMENT PIPE SPACER DETAIL FOR PIPE SPACER REQUIREMENTS AND WELDING REQUIREMENTS FOR STEEL ENCASEMENT PIPE.

PRELIMINARY PLANS NOT FOR CONSTRUCTION



- NOTES:
1. THRUST BLOCKS DESIGNED FOR 100 PSI PRESSURE AND 1000 PSF SOIL BEARING. FOR GREATER PRESSURE OR LESS SOIL BEARING, QUANTITIES WILL HAVE TO BE RECALCULATED.
  2. THRUST BLOCKING TO BE POURED AGAINST UNDISTURBED EARTH.
  3. IF EXACT SIZE PIPE BLOCKING IS NOT SHOWN, USE NEXT LARGER SIZE.
  4. THRUST BLOCKING TO BE POURED IN PLACE CLASS B CONCRETE.

**THRUST BLOCKS**  
SCALE: N.T.S.

90° BEND							
SIZE	18"	16"	12"	10"	8"	6"	4"
A	72	64	50	40	33	26	16
B	72	64	50	40	33	24	16
C	32	30	16	15	12	12	9
D	36	32	25	20	16	12	8

45° BEND							
SIZE	18"	16"	12"	10"	8"	6"	4"
A	54	48	37	31	24	18	12
B	54	48	37	31	24	18	12
C	16	18	16	14	12	12	8
D	25	22	18	15	12	9	6

22 1/2° BEND							
SIZE	18"	16"	12"	10"	8"	6"	4"
A	38	34	26	23	18	13	9
B	38	34	26	23	18	13	9
C	16	18	16	14	12	10	8
D	18	16	13	11	9	6	4

11 1/4° BEND							
SIZE	18"	16"	12"	10"	8"	6"	4"
A	27	24	18	16	13	11	9
B	27	24	18	16	13	11	9
C	16	18	16	14	12	10	8
D	14	12	9	8	6	5	4

PLUG							
SIZE	18"	16"	12"	10"	8"	6"	4"
A	60	54	52	43	34	26	26
B	60	54	52	43	34	26	26
C	12	12	12	12	12	12	12
D	54	44	32	22	15	11	11

TEE							
SIZE	18"	16"	12"	10"	8"	6"	4"
A	60	54	52	42	26	43	26
B	60	54	52	43	26	43	26
C	32	30	12	12	12	12	12
D	36	30	26	21	13	21	13

DIMENSIONS ARE IN INCHES

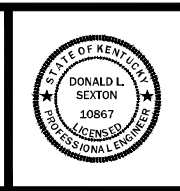
NO.	DATE	REVISIONS	DATE	APPR'D	DATE

PROJECT: 410	DATE: 11/22/05
SCALE: AS NOTED	
DESIGNED BY: LWC	
DRAWN BY: CAN	
CHECKED BY: DS	
RECORD DRAWINGS	

**CANN-TECH, LLC**  
Engineers · Planners · Managers

1100 Glensboro Road  
Lawrenceburg, KY 40342

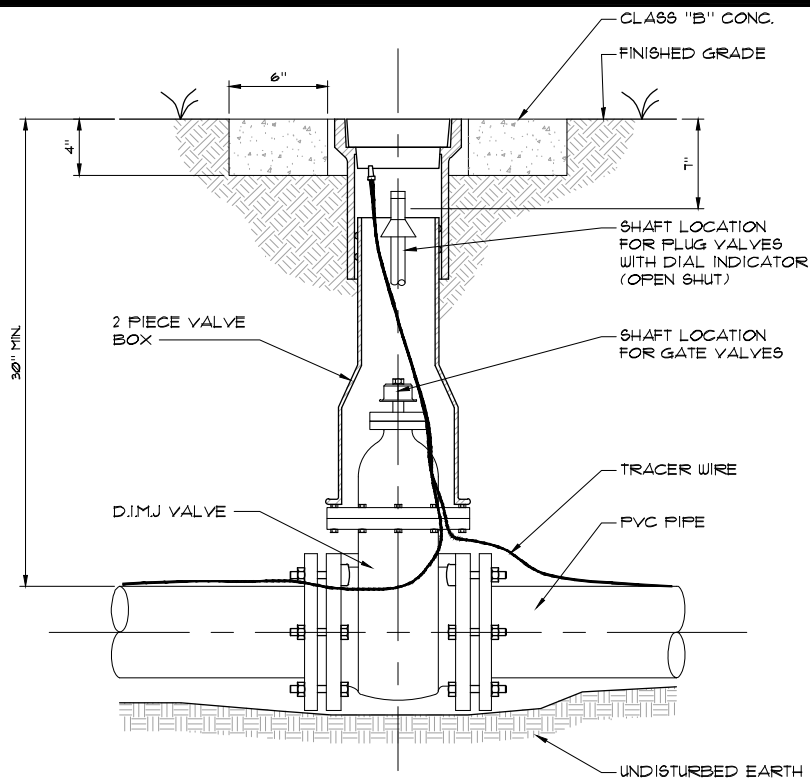
Phone (502) 859-0907  
Fax (502) 859-0668



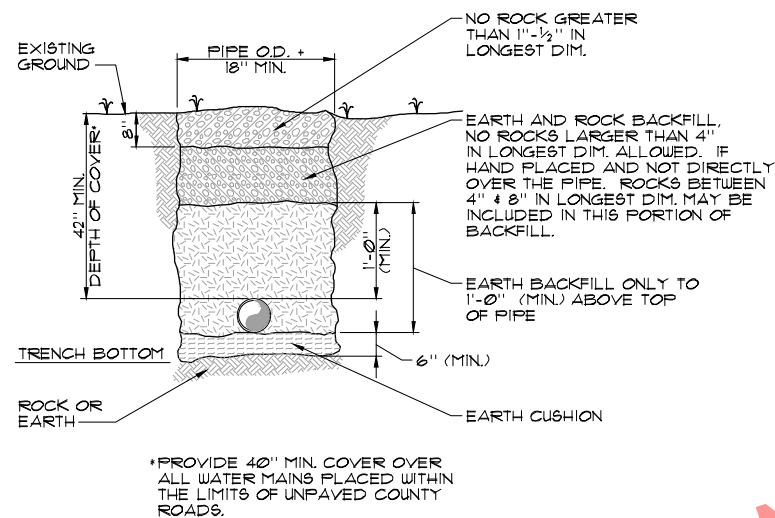
**WATER LINE RELOCATION PROJECT**  
**MORGAN COUNTY WATER DISTRICT**  
**MORGAN COUNTY, KENTUCKY**

STANDARD DETAILS

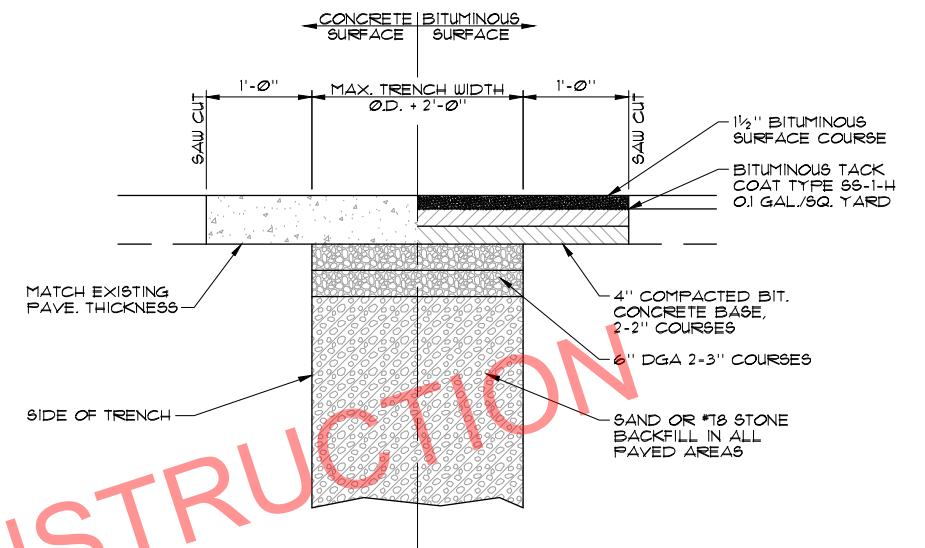
SHEET  
U11  
OF  
U14



- NOTES:  
 1. NO EXTRA PAY ALLOWED FOR CONCRETE COLLAR  
 2. CONCRETE PAD SHALL BE SQUARE  
 3. CONCRETE PAD REQUIRED ON ALL VALVES

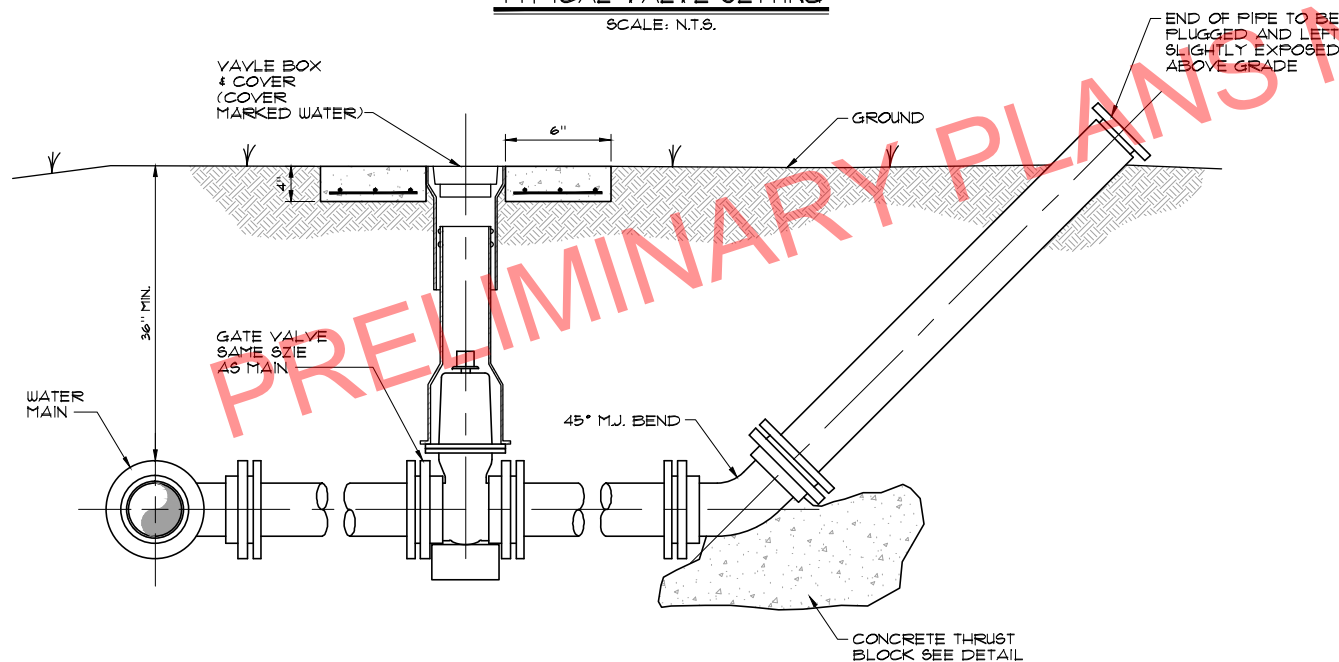


**BEDDING/BACKFILL**  
SCALE: N.T.S.

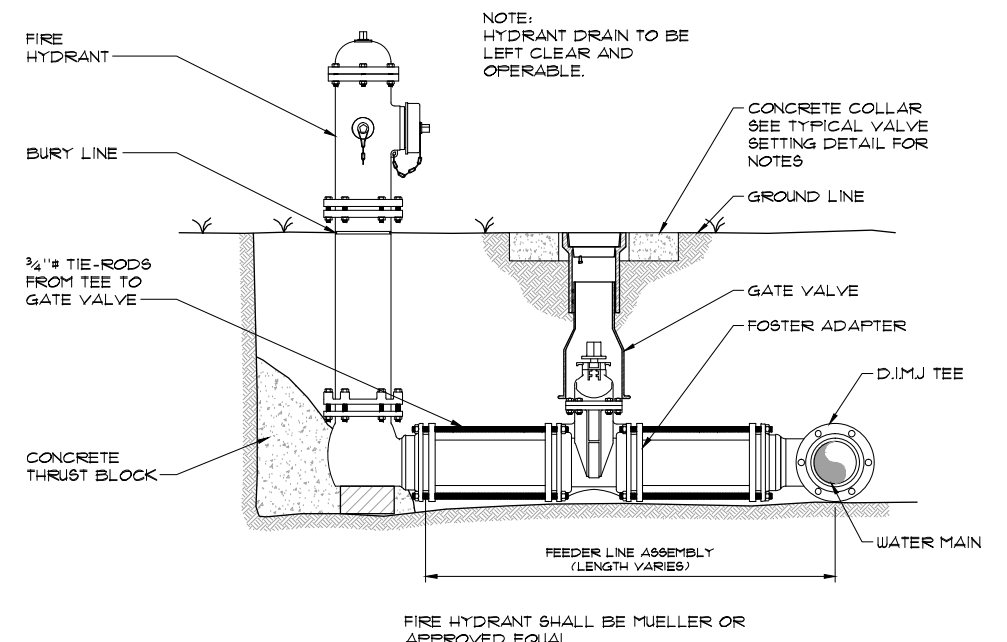


**PAVEMENT REPLACEMENT**  
SCALE: N.T.S.

**TYPICAL VALVE SETTING**  
SCALE: N.T.S.



**BLOWOFF ASSEMBLY**  
SCALE: N.T.S.



**FIRE HYDRANT (3 NOZZLE) OR SINGLE NOZZLE BLOW-OFF HYDRANT (1 NOZZLE)**  
SCALE: N.T.S.

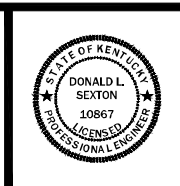
NO.	DATE	REVISIONS	DATE	APPR'D	DATE

PROJECT: 410	DATE: 11/2/2015
SCALE: AS NOTED	
DESIGNED BY: LUC	
DRAWN BY: CAN	
CHECKED BY: DS	
RECORD DRAWINGS	

**CT CANN-TECH, LLC**  
 Engineers · Planners · Managers

1100 Glensboro Road  
 Lawrenceburg, KY 40342

Phone (502) 859-0907  
 Fax (502) 859-0668



**WATER LINE RELOCATION PROJECT**  
**MORGAN COUNTY WATER DISTRICT**  
**MORGAN COUNTY, KENTUCKY**

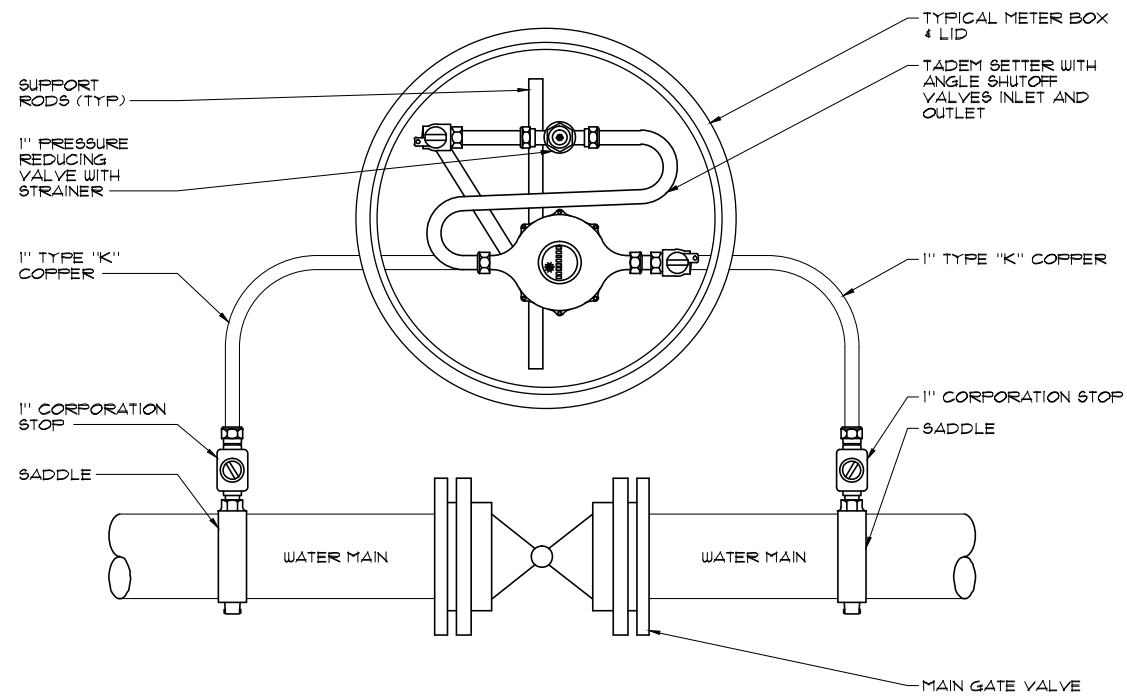
STANDARD DETAILS

SHEET U12 OF U14

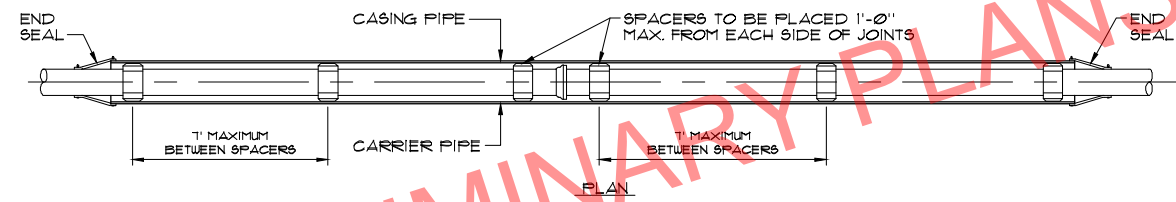
MORGAN COUNTY DISTRICT ENGINEER: DONALD L. SEXTON, P.E., LICENSE NO. 10867, STATE OF KENTUCKY



NOTES:  
 1. BOX AND SETTER TO BE PRE-FABRICATED.  
 2. A TOTAL OF TWO (2) 1" METERS TO BE SUPPLIED AND DELIVERED TO THE WATER DISTRICT FOR USE WHERE METER SETTERS ARE INSTALLED AT THE GATE VALVES.



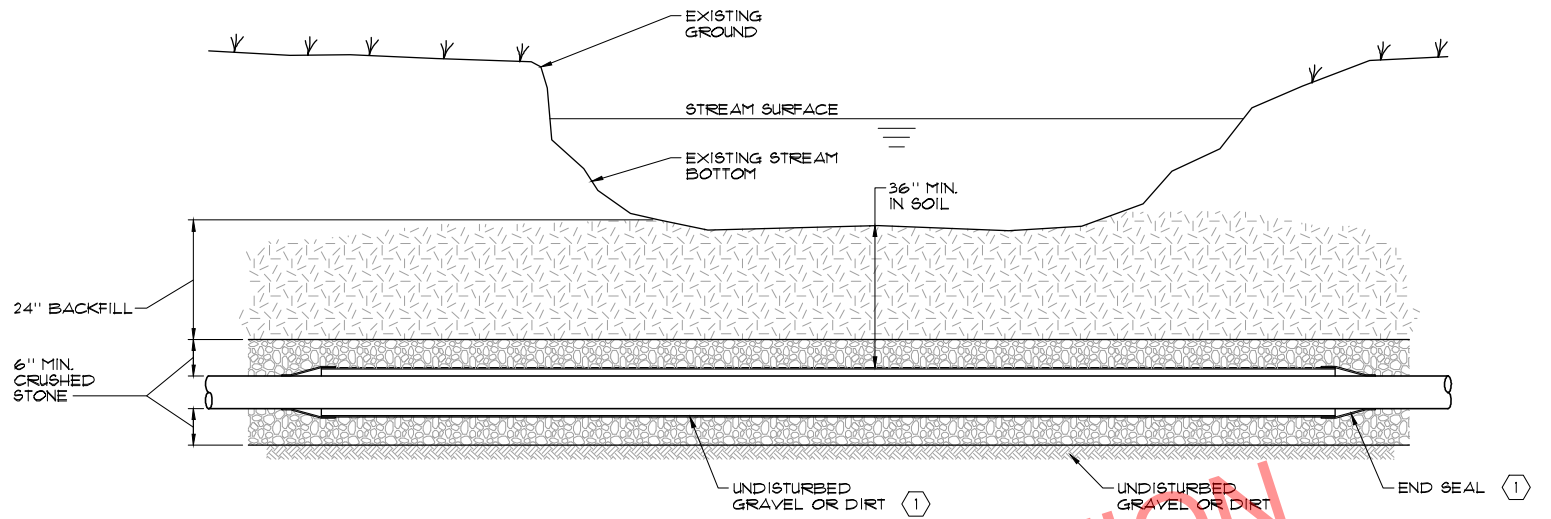
**TEST METER AT GATE VALVE**  
 SCALE: N.T.S.



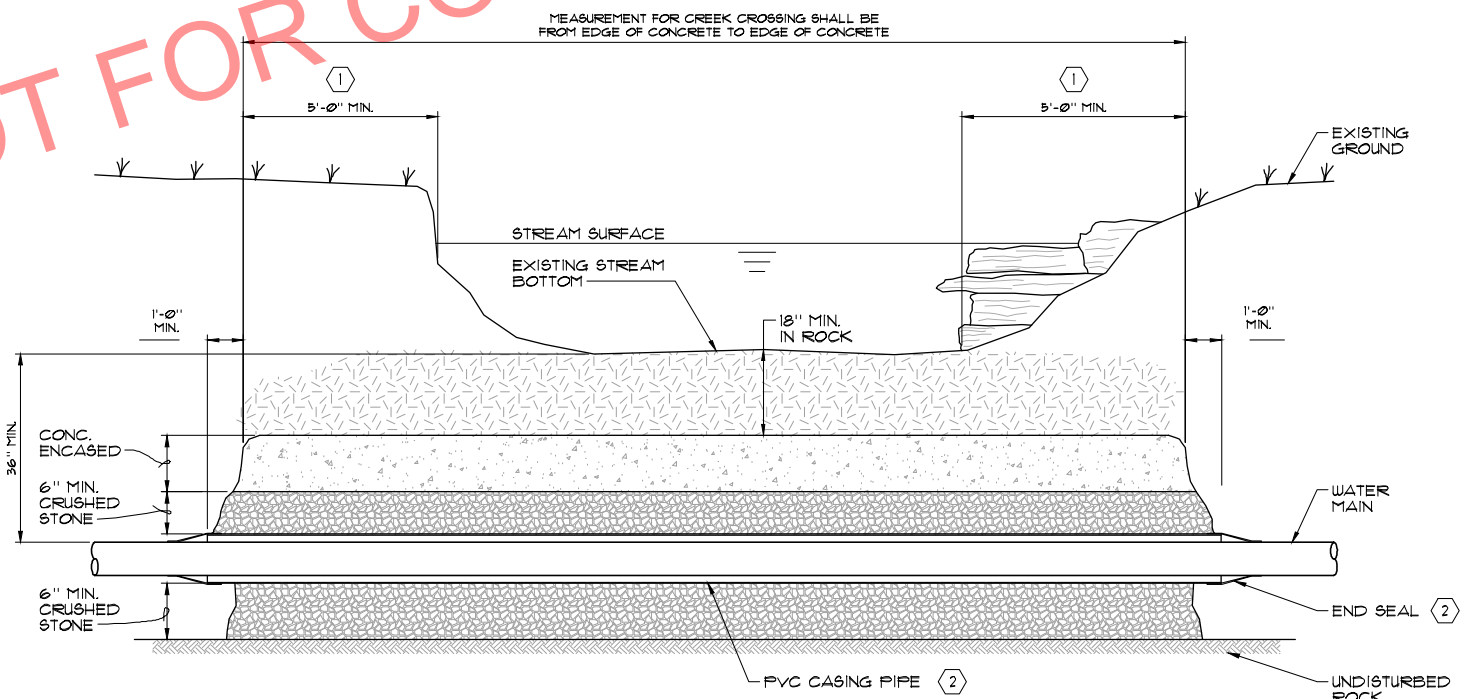
**TYPICAL ROAD CROSSING NOTES:**  
 1. ALL JOINTS SHALL BE SOLIDLY WELDED. END CASING SHALL BE SEALED AFTER LINE HAS BEEN INSTALLED AND TESTED.  
 2. MINIMUM DEPTHS MAY INCREASE IN AREA WHICH REQUIRE MINIMUM SEPARATION WITH OTHER FACILITIES.  
 3. OPEN TRENCH NO CLOSER THAN THE DITCH LINE OR TOE OF FILL FROM THE EDGE OF THE PAVEMENT OR AS DIRECTED BY STATE, COUNTY OR MUNICIPAL SPECIFICATIONS.  
 4. HIGHWAY CROSSINGS SHALL UTILIZE STEEL CASING PIPE. STEEL CASING PIPES 4" AND LESS SHALL BE NEW SCHEDULE 40. STEEL CASING PIPES LARGER THAN 4" SHALL HAVE MINIMUM WALL THICKNESS OF 0.25". ALL BORED AND JACKED ENCASMENT PIPE SHALL BE INSTALLED IN BORE HOLES NO LARGER THAN THE OUTSIDE DIAMETER OF THE ENCASMENT PIPE.

**TYPICAL STREAM CROSSING NOTES:**  
 1. END CASING SHALL BE SEALED AFTER LINE HAS BEEN INSTALLED AND TESTED.  
 2. CONCRETE CAP SHALL END A MINIMUM OF ONE FOOT FROM EDGE OF CASING PIPE.  
 3. STREAM CROSSINGS SHALL UTILIZE PVC SDR-35 CASING PIPE.

**ENCASMENT PIPE SPACER**  
 SCALE: N.T.S.



**TYPE "A" STREAM CROSSING**  
 GRAVEL OR DIRT BOTTOM WITH GRAVEL CAP  
 SCALE: N.T.S.



**NOTES:**  
 (1) CONCRETE TO EXTEND 5'-0" @ BEGINNING POINT OF BANK  
 (2) REFER TO DETAIL - ENCASMENT PIPE SPACER

**TYPE "B" STREAM CROSSING**  
 SOLID ROCK BOTTOM WITH CONCRETE CAP  
 SCALE: N.T.S.

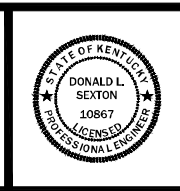
NO.	DATE	REVISIONS	DATE	APPR'D	DATE

PROJECT: 410	DATE: 11/2/05
SCALE: AS NOTED	
DESIGNED BY: LUC	
DRAWN BY: CAN	
CHECKED BY: DS	
RECORD DRAWINGS	

**CT CANN-TECH, LLC**  
 Engineers · Planners · Managers

1100 Glensboro Road  
 Lawrenceburg, KY 40342

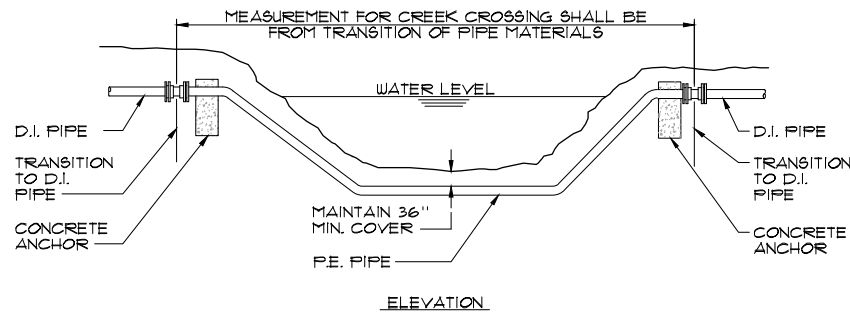
Phone (502) 859-0907  
 Fax (502) 859-0668



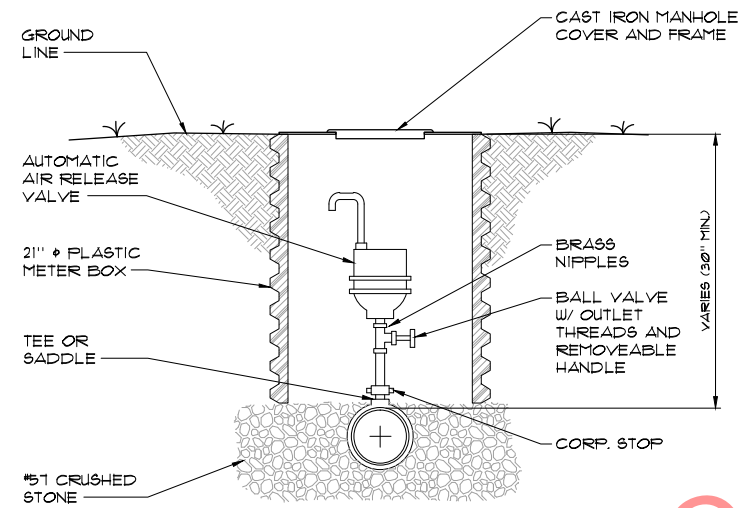
**WATER LINE RELOCATION PROJECT**  
**MORGAN COUNTY WATER DISTRICT**  
**MORGAN COUNTY, KENTUCKY**

STANDARD DETAILS

SHEET U13  
 OF U14



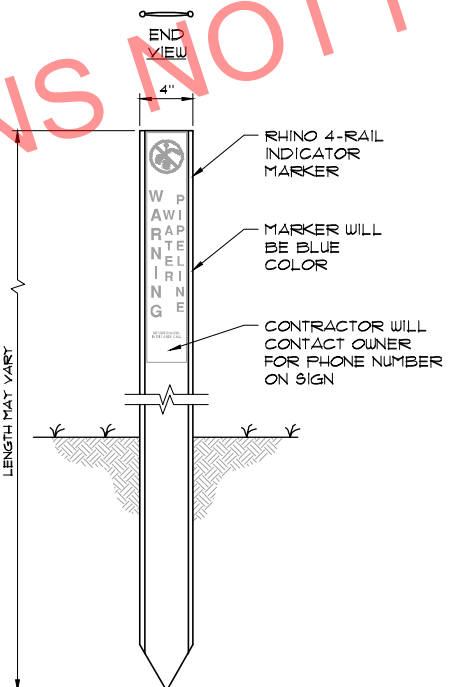
**DIRECTIONAL BORE CREEK CROSSING**  
SCALE: N.T.S.



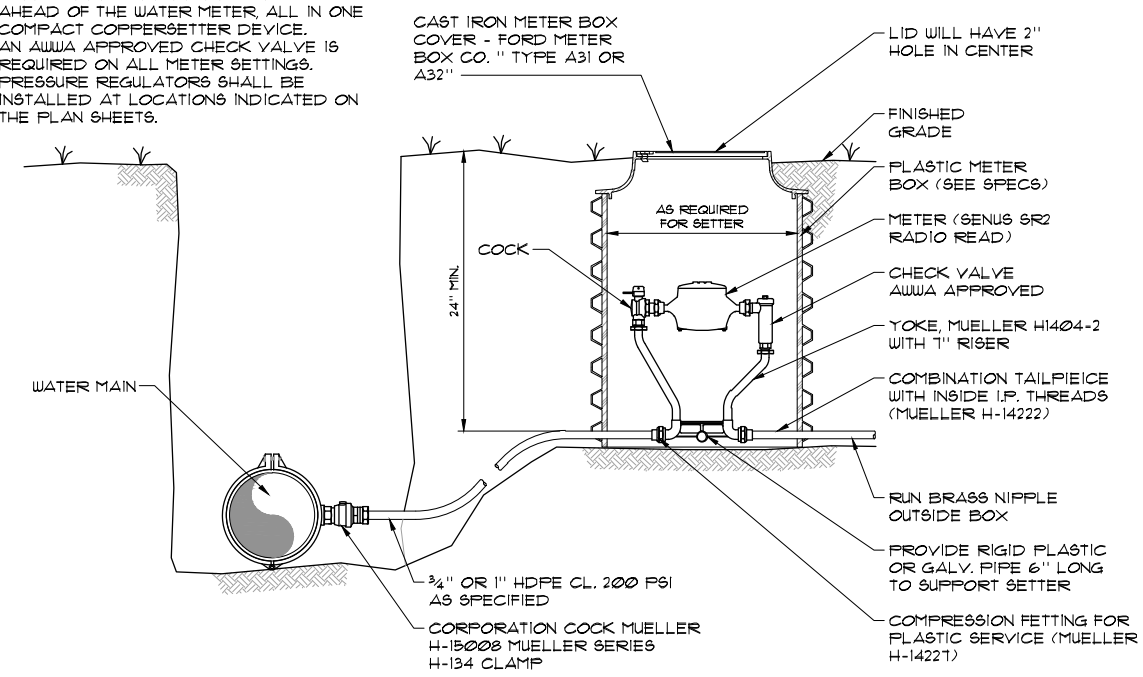
**AUTOMATIC AIR RELEASE VALVE**  
SCALE: N.T.S.

PRELIMINARY PLANS NOT FOR CONSTRUCTION

- NOTES:
- WHERE PRESSURE REGULATORS ARE TO BE INSTALLED AS SHOWN ON THE PLANS, THE CONTRACTOR SHALL USE A TANDEN COPPERSETTER. THE CONTRACTOR SHALL HOLD A PRESSURE REGULATOR JUST AHEAD OF THE WATER METER, ALL IN ONE COMPACT COPPERSETTER DEVICE.
  - AN AWWA APPROVED CHECK VALVE IS REQUIRED ON ALL METER SETTINGS.
  - PRESSURE REGULATORS SHALL BE INSTALLED AT LOCATIONS INDICATED ON THE PLAN SHEETS.




**WATER LINE MARKER**  
SCALE: N.T.S.



**TYPICAL METER SETTING**  
 $\frac{5}{8}$ \"/>

NO.	DATE	REVISIONS	DATE	APP'D	DATE

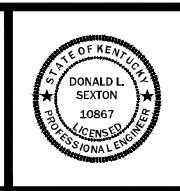
PROJECT: 410	DATE: 11/2/015
SCALE: AS NOTED	
DESIGNED BY:	LWC
DRAWN BY:	CAN
CHECKED BY:	DS
RECORD DRAWINGS	



**CANN-TECH, LLC**  
Engineers · Planners · Managers

1100 Glensboro Road  
Lawrenceburg, KY 40342

Phone (502) 859-0907  
Fax (502) 859-0668



**WATER LINE RELOCATION PROJECT**  
**MORGAN COUNTY WATER DISTRICT**  
**MORGAN COUNTY, KENTUCKY**

STANDARD DETAILS

SHEET U14  
OF U14